

Setup Viewer Manual



Rich Jamison and Chris Kimrey

Copyright 2021

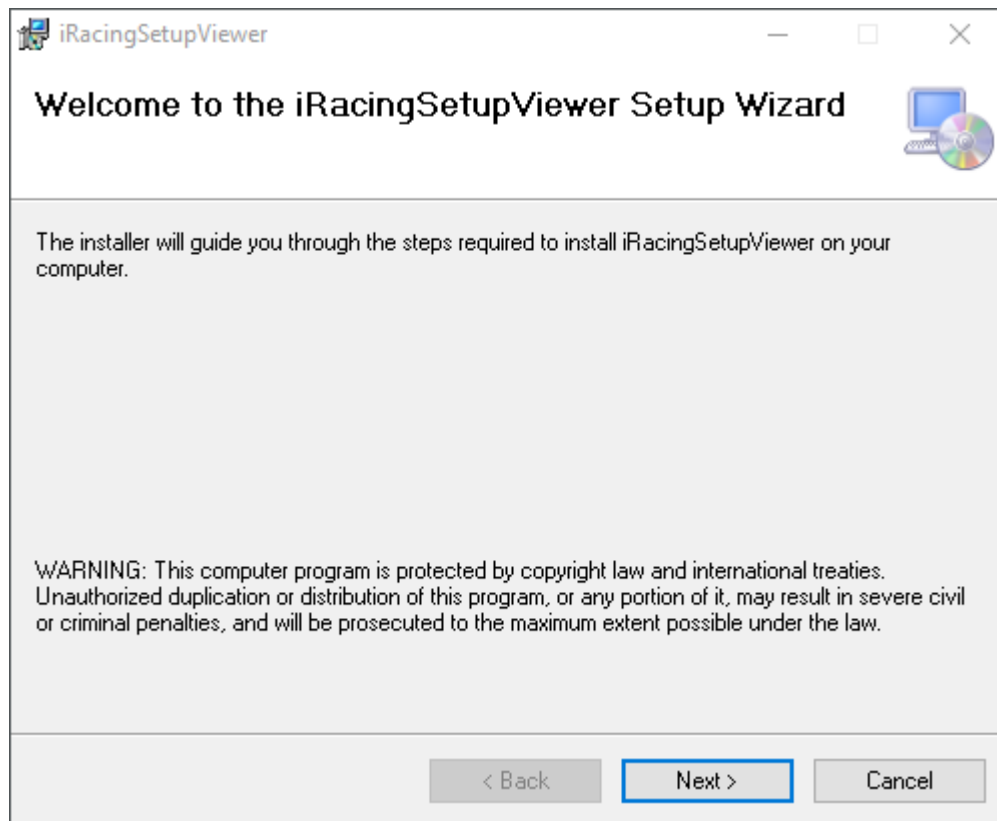
Introduction

Welcome to Setup Viewer for iRacing! Thank you for giving this program a try and I hope you find it useful! If you would like to provide any feedback or report an issue, send an email to rich.jamison.work@gmail.com and we will take a look. I enjoy giving back to the iRacing Community and learning how to program so, working on this program is a win-win for me. If you would like to know the history of how I came to being able to provide this program to you, please go to <https://www.setupviewer.com/> and click on the **History of Setup Viewer** link on the left side of the page. Since I initially took this on, I have teamed up with fellow iRacer Chris Kimrey who has taken on a major part of the programming and is teaching me along the way.

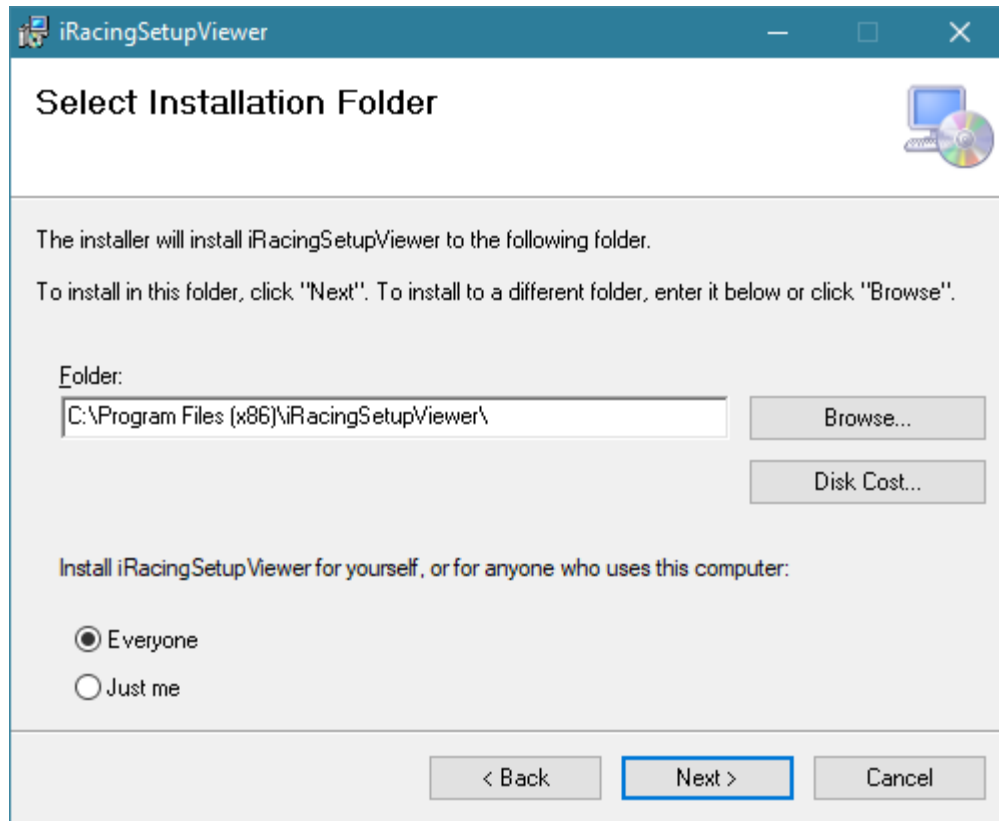
This program is provided to you for FREE! However, if you would like to support the efforts to keep the program going and updates, there is a DONATE button on the Setup Viewer website linked above. Donations are ALWAYS appreciated but are NOT required in order to use the program.

Installation

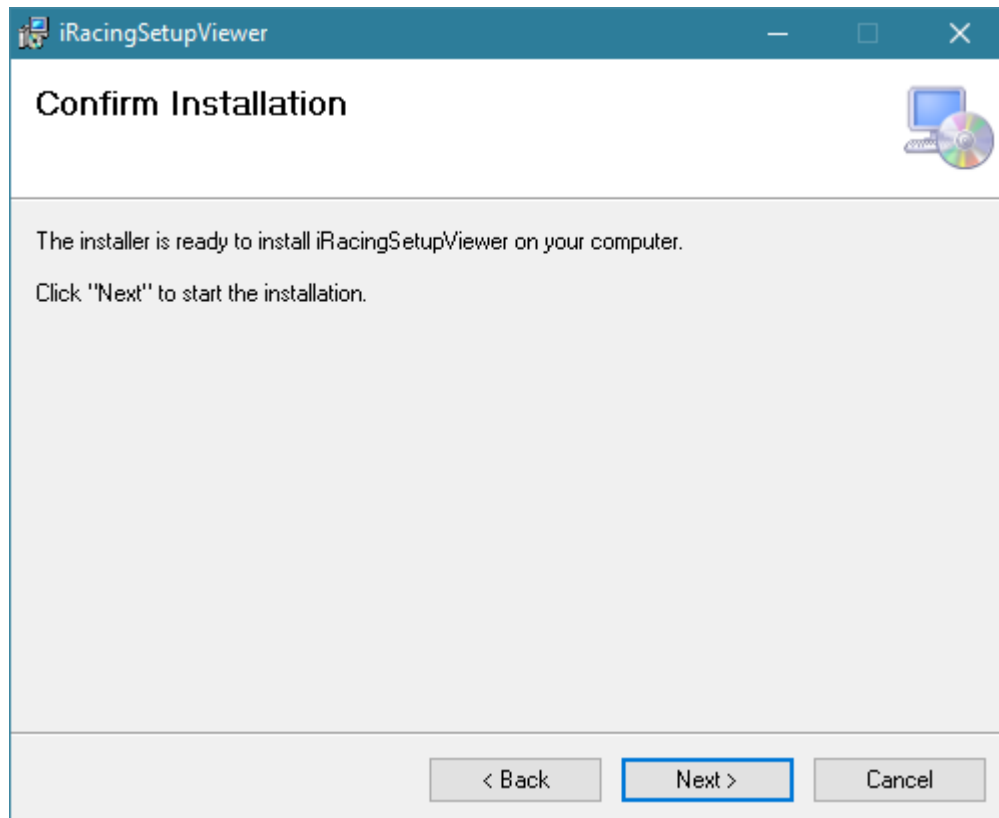
Installation is quite simple! Just download the MS Installer file, SetupViewer.msi, from the Setup Viewer website, double-click the file, and follow the prompts in the windows that follow.



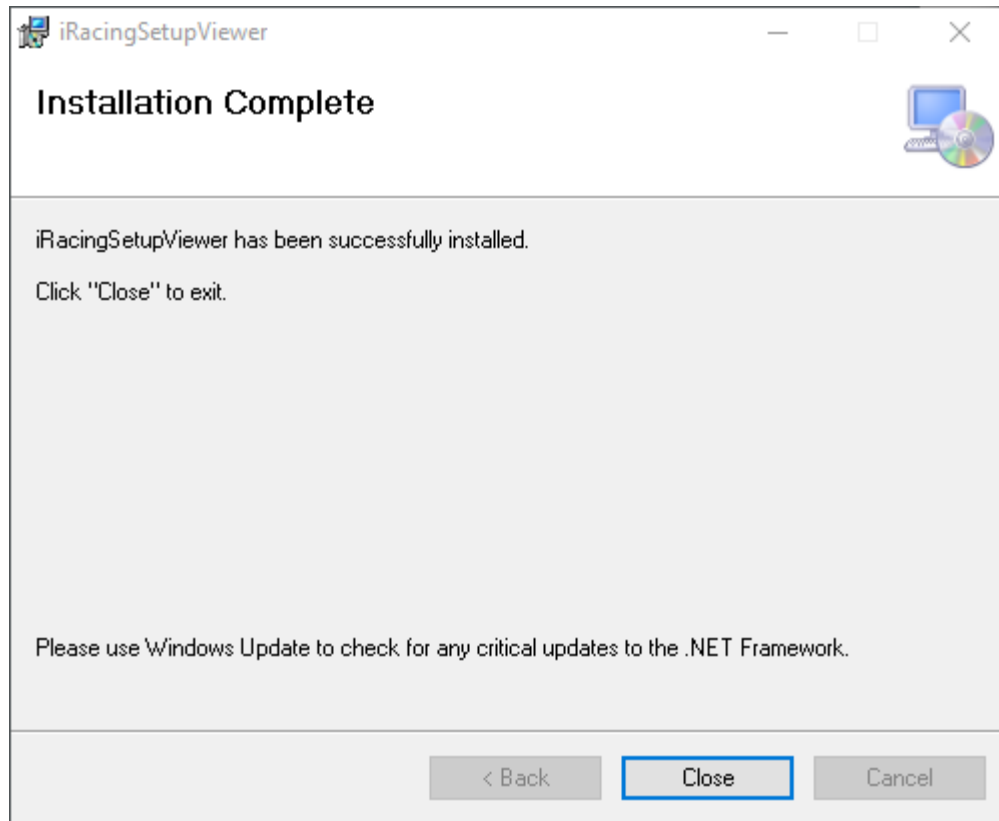
This is the first window that opens after double-clicking the installation file. After reviewing the standard dialogue here, click **Next**.



Here, you will select the location where you would like to install the Setup Viewer files and whether you want the program available to **Everyone** who uses this computer or the **Just Me** option for you when you log into your machine. I usually select Everyone even though I am the only one who uses my iRacing machine.



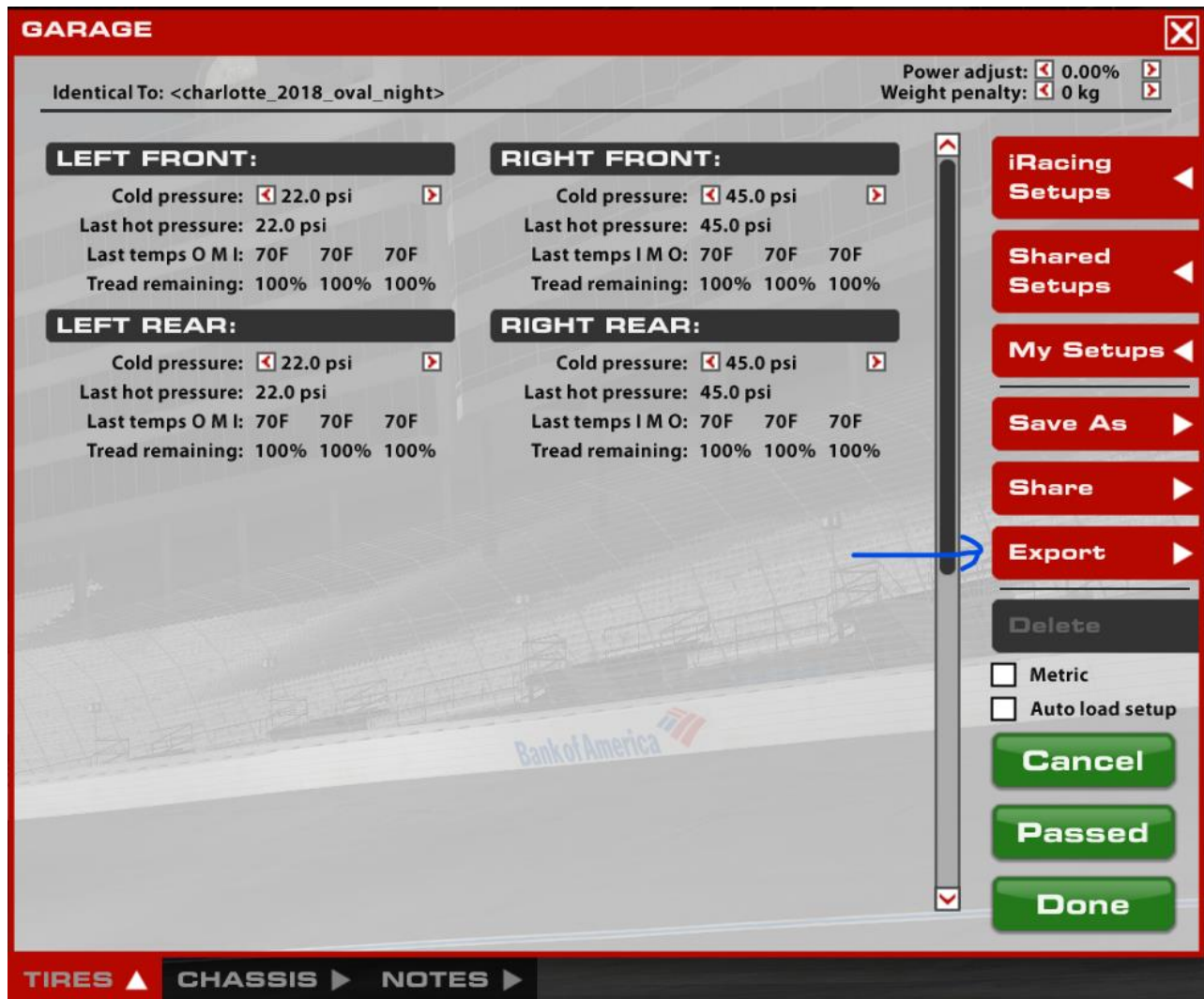
This is the standard "Are you sure?" window before installation begins. Clicking **Next** here will start the installation.



Congratulations! You have successfully installed the program! Click the **Close** button.

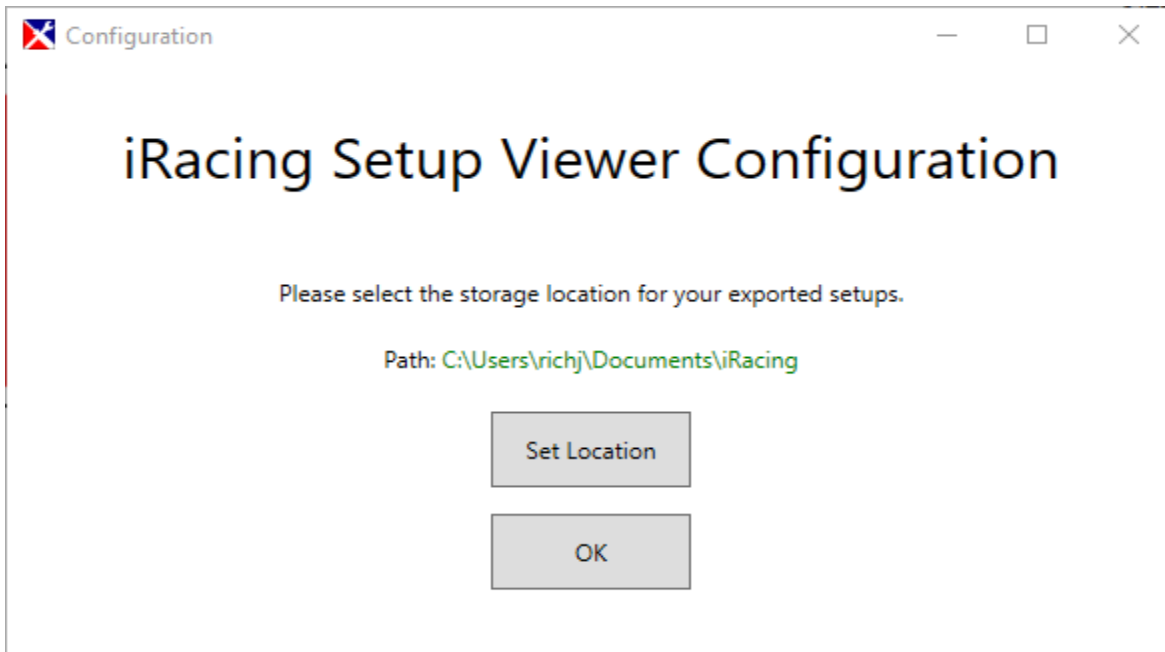
Before starting the program...

If you have not done so already, you will need to export your setups from the iRacing garage before the program can find them. Clicking the **Export** button in the garage screen (as shown in the screenshot below) will open a dialog box where you will name the setup and the sim will create an .html file. The program reads this .html file so it can be viewed.



Instructions

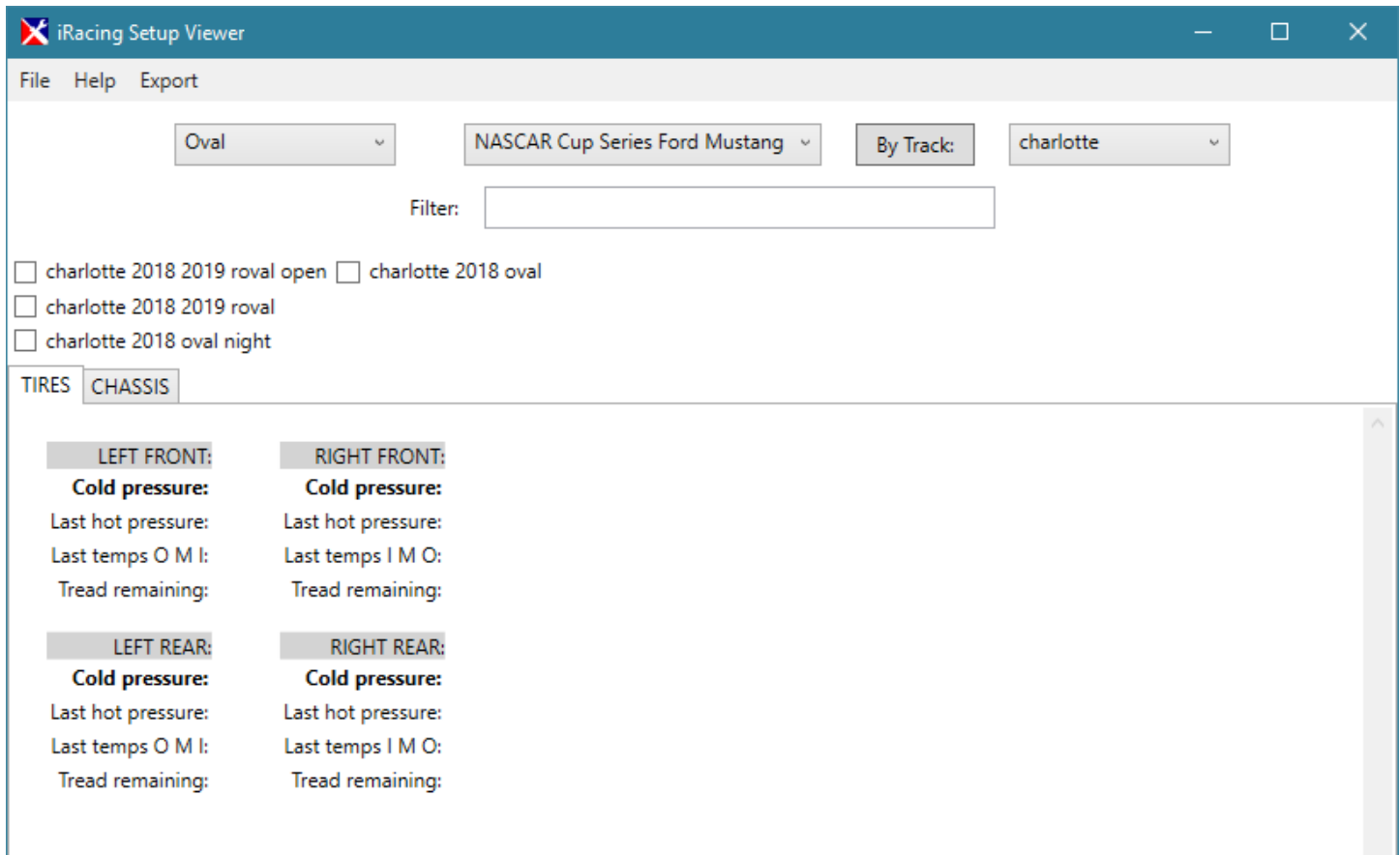
When you start iRacing Setup Viewer for the first time, you will be brought to the **Configuration** window. Here you will need to tell the program where your exported iRacing setups are located. To do this, click on the **Set Location** button. This will open a window that will allow you to select which folder your setups are located in. By default, it starts in the default iRacing location for setups.



Once you have chosen the folder, click **OK**.

After selecting the location for your setups, you will be brought to the Main window of Setup Viewer. The program, at this point, has scanned the folders in your selected setup location and they can be sorted by using the dropdowns. You can sort by the Type vehicle: Oval, Road, Dirt Oval, Dirt Road, Legacy Oval, and Legacy Road.

Once you've selected the type of vehicle, you can then select the specific vehicle from the next dropdown. By default, the program will sort your setups by the track and give you a dropdown to select which track setups you want to compare. However, if you sort your setups in folders another way (season, version, date, etc), you can click on the button that shows **By Track:** in the screenshot below and it will sort the accompanying dropdown by the folders and sub-folders in the in the location you specified in the beginning.



Regardless of how you choose to sort them, Setup Viewer will then show all the exported setup files in the selected folder.

Comparing Setups

Now that you have your options selected, you can start comparing setups with Setup Viewer. From the screenshot below, I have selected 2 of my exported setups out of the 4 I exported (iRacing defaults for the NASCAR Cup Ford Mustang). I have selected the **CHASSIS** tab and it shows all the settings for both sets side-by-side, with the differences highlighted in yellow. Any of the settings that are the same do not show the yellow highlight. The text of each setup is specific to the setup. For instance, the *charlotte 2018 2019 roval open* set has maroon text. The *charlotte 2018 2019 roval* set has green text. You can open more than just the 2 sets for comparison if you would like. I am not aware of a limitation to this, other than window space.

This program only allows you to *view* the setup. There is no option to make any changes to a setup here. All changes to a setup **MUST** be made in the garage in-sim. This is the way iRacing uses the .sto files in that they can only be read while in-sim. This is the reason you must export your setups prior to viewing them in the Setup Viewer program.

Oval

NASCAR Cup Series Ford Mustang

By Track:

charlotte

Filter:

 charlotte 2018 2019 roval open charlotte 2018 oval charlotte 2018 2019 roval charlotte 2018 oval night

TIRES CHASSIS

FRONT:

| | | |
|----------------------------|--------|--------|
| Ballast forward: | 25.0" | 20.0" |
| Nose weight: | 52.3% | 51.8% |
| Cross weight: | 57.2% | 56.1% |
| Steering ratio: | 10:1 | 10:1 |
| Steering offset: | +4 deg | +4 deg |
| Front brake bias: | 68.0% | 68.0% |
| Tape configuration: | 10% | 37% |

LEFT FRONT:

| | | |
|-----------------------------|----------------|----------------|
| Corner weight: | 841 lbs | 846 lbs |
| Ride height: | 2.233 in | 1.956 in |
| Shock deflection: | 4.71" of 8.25" | 4.68" of 8.32" |
| Spring deflection: | 0.48" of 5.22" | 0.55" of 5.22" |
| Spring perch offset: | -1.656" | -1.750" |
| Spring rate: | 900 lbs/in | 900 lbs/in |
| Shock Spring Rate: | 2000 lbs/in | 2500 lbs/in |
| Packer: | 2.188" shim | 2.125" shim |
| Bump stiffness: | +13 clicks | +16 clicks |
| Rebound stiffness: | +12 clicks | +10 clicks |
| Camber: | -6.8 deg | -6.2 deg |
| Caster: | +12.0 deg | +12.5 deg |
| Toe-in: | +16/32" | +21/32" |

LEFT REAR:

| | | |
|-----------------------------|-----------------|-----------------|
| Corner weight: | 1010 lbs | 994 lbs |
| Ride height: | 5.614 in | 4.757 in |
| Shock deflection: | 6.46" of 12.00" | 7.42" of 12.00" |
| Spring deflection: | 1.53" of 11.00" | 1.51" of 11.00" |
| Spring perch offset: | -5.969" | -5.125" |
| Spring rate: | 700 lbs/in | 700 lbs/in |
| Bump stiffness: | +13 clicks | +16 clicks |
| Rebound stiffness: | +5 clicks | +8 clicks |
| Camber: | -1.9 deg | -1.9 deg |
| Toe-in: | +2/32" | +1/32" |
| Track bar height: | +6.000" | +6.000" |
| Truck arm mount: | bottom | bottom |

FRONT ARB:

| | | |
|---------------------------|------------|------------|
| Diameter: | 1.875" | 2.000" |
| Arm asymmetry: | None | None |
| Link slack: | 11/16" | 11/16" |
| Preload: | 0.0 ft-lbs | 0.0 ft-lbs |
| Attach: | Yes | Yes |
| Dash Display Page: | Page 1 | Page 1 |

RIGHT FRONT:

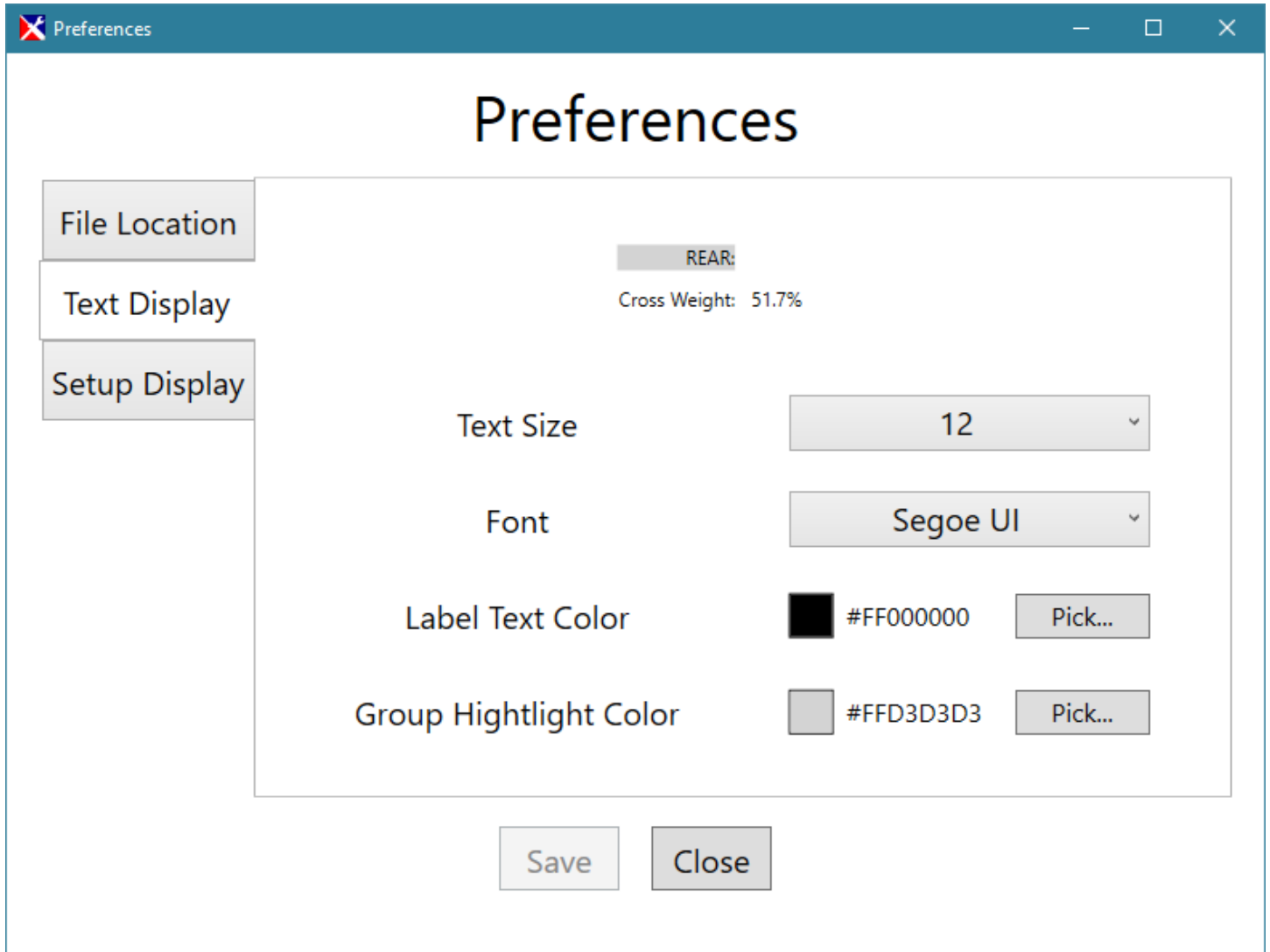
| | | |
|-----------------------------|----------------|----------------|
| Corner weight: | 968 lbs | 943 lbs |
| Ride height: | 4.302 in | 4.145 in |
| Shock deflection: | 3.21" of 6.81" | 3.17" of 6.81" |
| Spring deflection: | 0.45" of 5.22" | 0.32" of 5.22" |
| Spring perch offset: | -1.781" | -1.688" |
| Spring rate: | 900 lbs/in | 900 lbs/in |
| Shock Spring Rate: | 2000 lbs/in | 2500 lbs/in |
| Packer: | 2.188" shim | 2.188" shim |
| Bump stiffness: | +13 clicks | +16 clicks |
| Rebound stiffness: | +12 clicks | +10 clicks |
| Camber: | -4.8 deg | -4.8 deg |
| Caster: | +11.7 deg | +12.2 deg |
| Toe-in: | -9/32" | -4/32" |

RIGHT REAR:

| | | |
|-----------------------------|-----------------|-----------------|
| Corner weight: | 637 lbs | 672 lbs |
| Ride height: | 7.653 in | 6.916 in |
| Shock deflection: | 5.64" of 12.00" | 6.55" of 12.00" |
| Spring deflection: | 0.61" of 11.00" | 0.63" of 11.00" |
| Spring perch offset: | -6.031" | -5.250" |
| Spring rate: | 700 lbs/in | 750 lbs/in |
| Travel to coil bind: | OFF | OFF |
| Bump stiffness: | +13 clicks | +18 clicks |
| Rebound stiffness: | +5 clicks | +8 clicks |
| Camber: | -2.3 deg | -2.7 deg |
| Toe-in: | -1/32" | -1/32" |
| Track bar height: | +8.250" | +7.000" |
| Truck arm mount: | bottom | bottom |
| Truck arm preload: | 178.2 ft-lbs | 183.0 ft-lbs |

Preferences-Text Display

You can customize how your Setup Viewer displays the setup info by going to the **Preferences** option under the **File** menu item. Here, you are able to select many text and highlight options, including colors.



Preferences

File Location

Text Display




Setup Display

Regular:


Camber: +5.1 deg +5.1 deg +5.1 deg +5.1 deg +5.1 deg +5.1 deg

Highlighted:

Caster: +4.4 deg +4.4 deg +4.4 deg +4.4 deg +4.4 deg +4.4 deg

- | | | | | | | | |
|----|---|-----------|--|----|---|-----------|--|
| 1: |  | #FF8B0000 | <input data-bbox="771 625 922 674" type="button" value="Pick..."/> | 4: |  | #FF800080 | <input data-bbox="1286 625 1437 674" type="button" value="Pick..."/> |
| 2: |  | #FF00008B | <input data-bbox="771 688 922 737" type="button" value="Pick..."/> | 5: |  | #FFFF8C00 | <input data-bbox="1286 688 1437 737" type="button" value="Pick..."/> |
| 3: |  | #FF006400 | <input data-bbox="771 751 922 800" type="button" value="Pick..."/> | 6: |  | #FF483D8B | <input data-bbox="1286 751 1437 800" type="button" value="Pick..."/> |

Highlight:

 #FFFFFF00

Save

Close